



Safe Systems Approach to Road Safety Management

Working for a world free of road crash death and injury



Together we can
save millions
of lives.

The Global Road Safety Partnership is hosted by:



International Federation
of Red Cross and Red Crescent Societies



GLOBAL
ROAD SAFETY
PARTNERSHIP



-
- 1. Introduction**
 - 2. Overview of a Safe System Approach to Road Safety Management**
 - 3. The Principles of a Safe System Approach**
 - 4. Conclusion**





1. Introduction

- Grew out of the Vision Zero philosophy of the Swedish government since 1997
- Inspired by the Sustainably Safe model developed by the Dutch (Duurzaam Veilig 1992)
- The approach is pro-active
- Remedy gaps and mistakes in the traffic system before crashes occur.
- A lot more than just infrastructure.





2. Overview

- Reframes the way road safety management is viewed
- Address all elements of the road transport system
- Integrated approach - collective impact
- Crash energy levels will not lead to fatal or serious injury
- Each of the key elements to be addressed
 - *The road and roadside*
 - *The vehicle*
 - *Road user behaviour*
 - *Management*





GLOBAL
ROAD SAFETY
PARTNERSHIP



Always minimise the risk and impact



Together we can
save millions
of lives.

The Global Road Safety Partnership is hosted by:
 International Federation
of Red Cross and Red Crescent Societies



3. Principles of a safe system approach

1. No death or injury occurring on a road network is acceptable
2. The health and well-being of society should not be traded off against other social benefits
3. Human beings are fallible and prone to make mistakes
4. Human beings have tolerance thresholds to energy exchange – above that the absorption of energy is likely to lead to death or serious injury
5. Road users should not be exposed to energy exchanges that will lead to either death or life-disabling injury





Human Tolerances to Physical Forces

- <30 km/h pedestrians, cyclists (motorcyclists)
- <50km/h vehicle occupants in side impact crashes
- <70-80 km/h vehicle occupants in head on crashes





GLOBAL
ROAD SAFETY
PARTNERSHIP



Minimize Risk

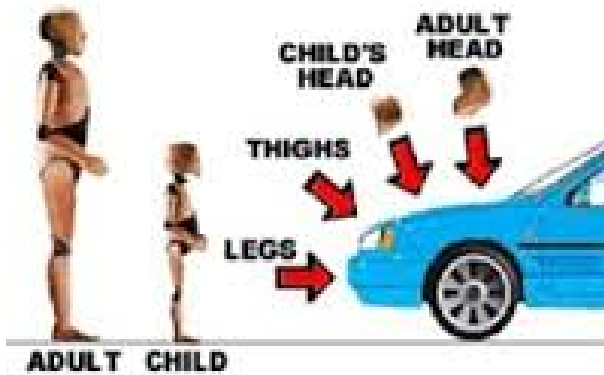


Together we can
save millions
of lives.

The Global Road Safety Partnership is hosted by:
 International Federation
of Red Cross and Red Crescent Societies



Vehicle Safety





Safer Road Users



Together we can
save millions
of lives.

The Global Road Safety Partnership is hosted by:
 International Federation
of Red Cross and Red Crescent Societies



Safe Road Environment



Together we can
save millions
of lives.

The Global Road Safety Partnership is hosted by:
 International Federation
of Red Cross and Red Crescent Societies




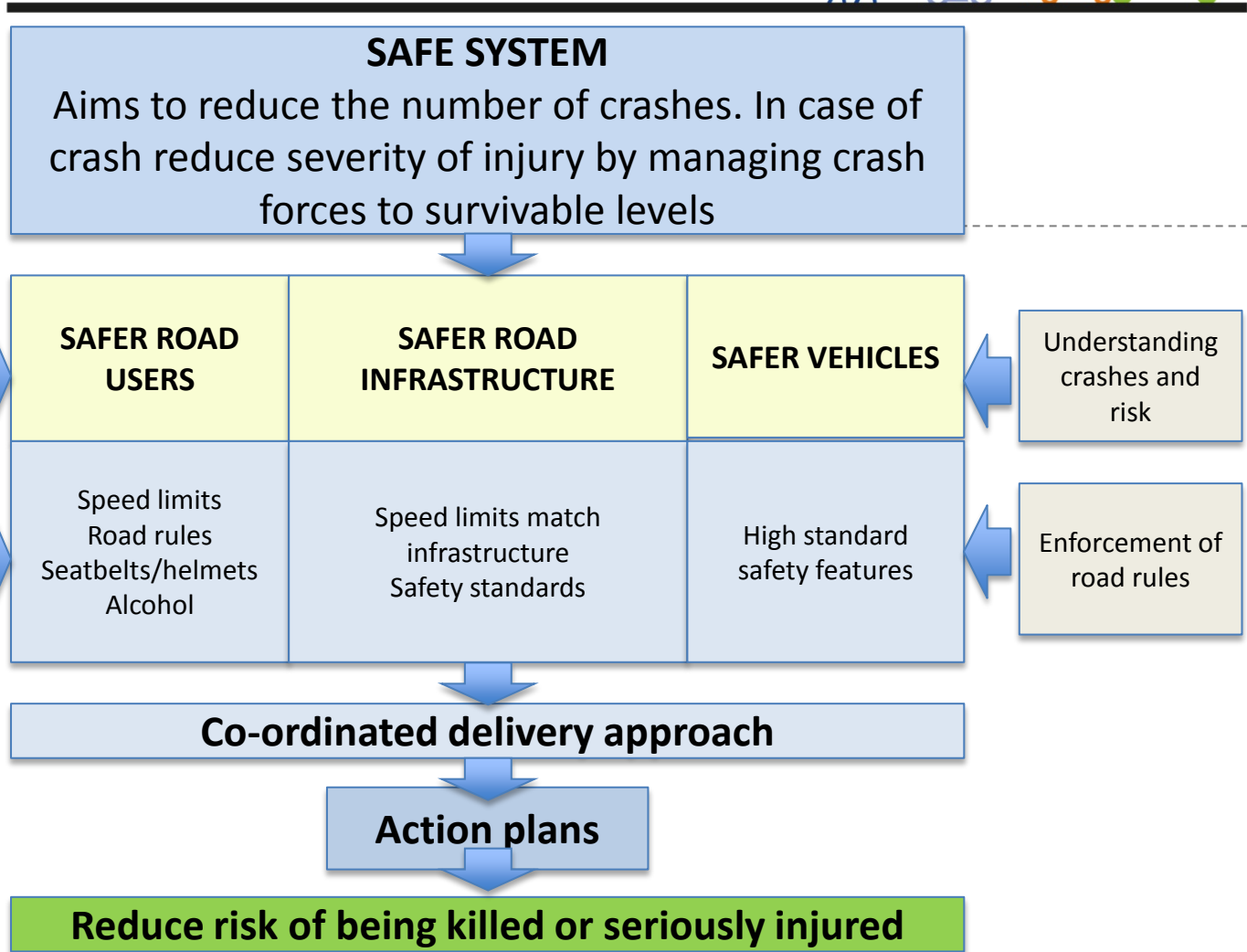
Minimize the Risk



Together we can
save millions
of lives.

The Global Road Safety Partnership is hosted by:

 International Federation
of Red Cross and Red Crescent Societies





4. Conclusion

- Aim to prevent all road crashes which result in deaths and serious injuries
- Accept that despite best efforts, road users make mistakes
- Death or serious injury should not be the price paid for these mistakes

Aim to achieve a road system better able to forgive road users' errors



Global Road Safety Partnership Secretariat

c/o International Federation of
Red Cross and Red Crescent Societies

P. O. Box 372
17, chemin des Crêts
CH-1211 Geneva 19
Switzerland

Tel: +41 (0) 22 730 42 49
Fax: +41 (0) 22 733 03 95
E-mail: grsp@ifrc.org

Website: www.grsproadsafety.org



Together we can
save millions
of lives.

The Global Road Safety Partnership is hosted by:



International Federation
of Red Cross and Red Crescent Societies



GLOBAL
ROAD SAFETY
PARTNERSHIP



What can community groups do?

- Understand the Safe System to promote it
- Advocate for speed limit changes
- Promote the use of safe vehicles
- Encourage local business to ensure safety of their employees
- Advocate for safety assured public transport
- Interact with local government